

# SD&TF Card Firmware Update Tutorial

1. Win32DiskImager-0.9.5-install.exe h

<https://www.dropbox.com/s/i22zcg2hp4jx94g/Win32DiskImager-0.9.5-install.exe?dl=0>

2. G5-20-v1.1.1beta.rar

<https://www.dropbox.com/s/3sbfddmmjx9xlyw9/G5-20-V1.1.1TF.7z?dl=0>

This is the TF-card firmware, add the function of solving internal logging type information overflow issue compared with V1.1.0.

<https://www.dropbox.com/s/at7s9isaraximb9/G5-20-V2.1.0SD.rar?dl=0>

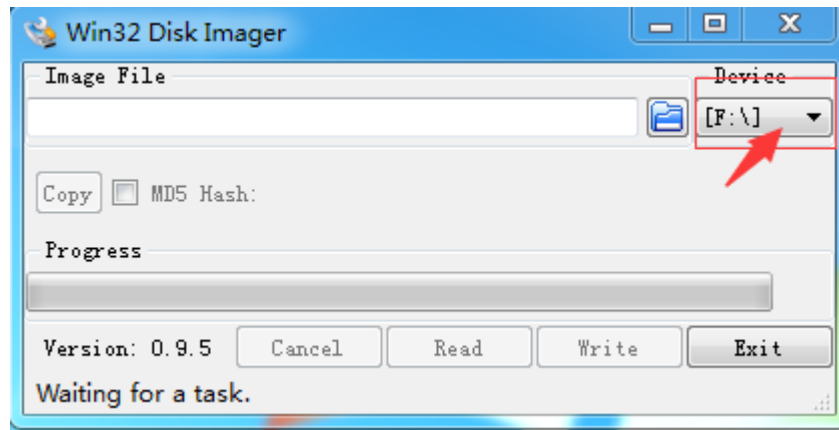
This is an SD card firmware, it is optimized and solve the bug that caused by the difficulty adjustment on 28<sup>th</sup> April, 2017.

**Note:** if the old version works, you can ignore these two versions updates.

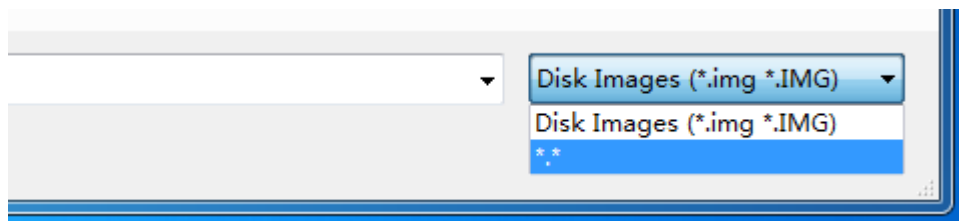
We take the screenshot below and firmware G5-20-1028 as an example.

The installation for each firmware update is the same.

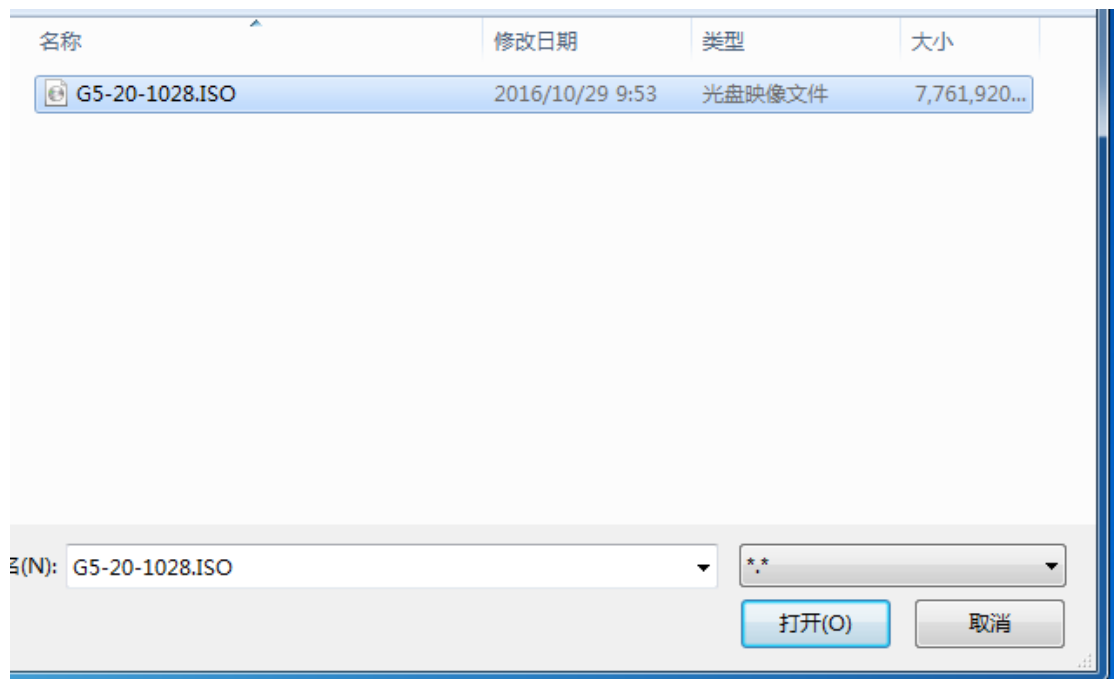
1. The two files are required to upgrade the firmware. Download to computer, install the win32diskimager application, extract another zip file to get a 7.4GB ISO image file.
2. Put the SD/TF card into your computer, open the win32diskimager software. It will automatically recognize your SD/TF card drive letter. If computer has been connected with two or more external device, manually select the SD/TF card drive.



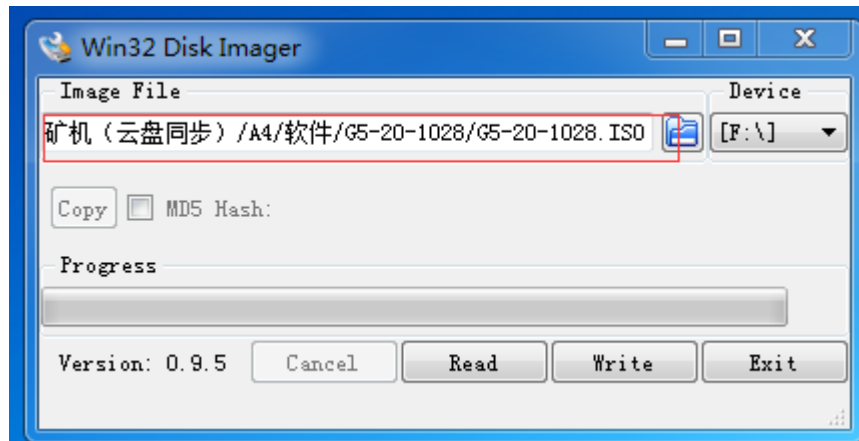
3. Click on the blue folder icon in front of the drive letter path, path selection window will appear as below, click on the figure below identifies the drop-down triangle, select the file type to “\*.\*”



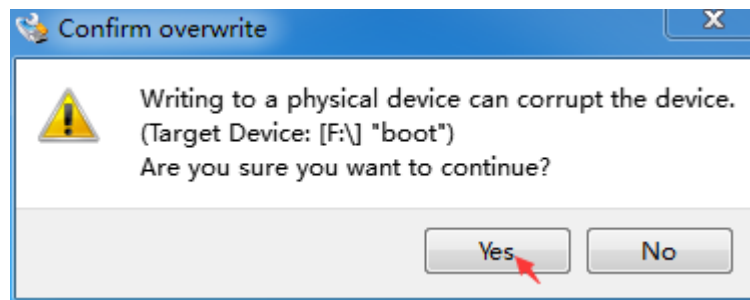
4. Open the extracted ISO file.



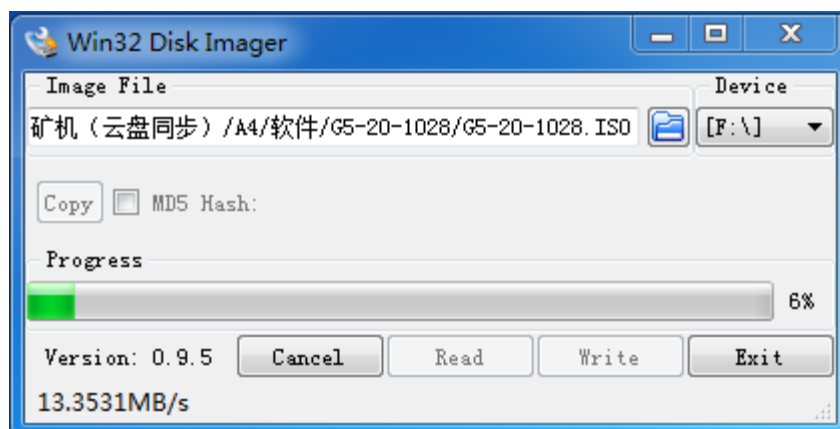
5. Find file path already appears in the Win32 disk imager software.



6. Click the progress bar below the "write" button below confirmation window appears, click "Yes".



7. Enter the refreshing mode of firmware, with the progress bar starts refreshing.



8. When the progress bar is updated to 100%, a confirmation window appears again, click OK. Withdraw the SD/TF card to complete the firmware update, the updated IP: 192.168.1.254.

